

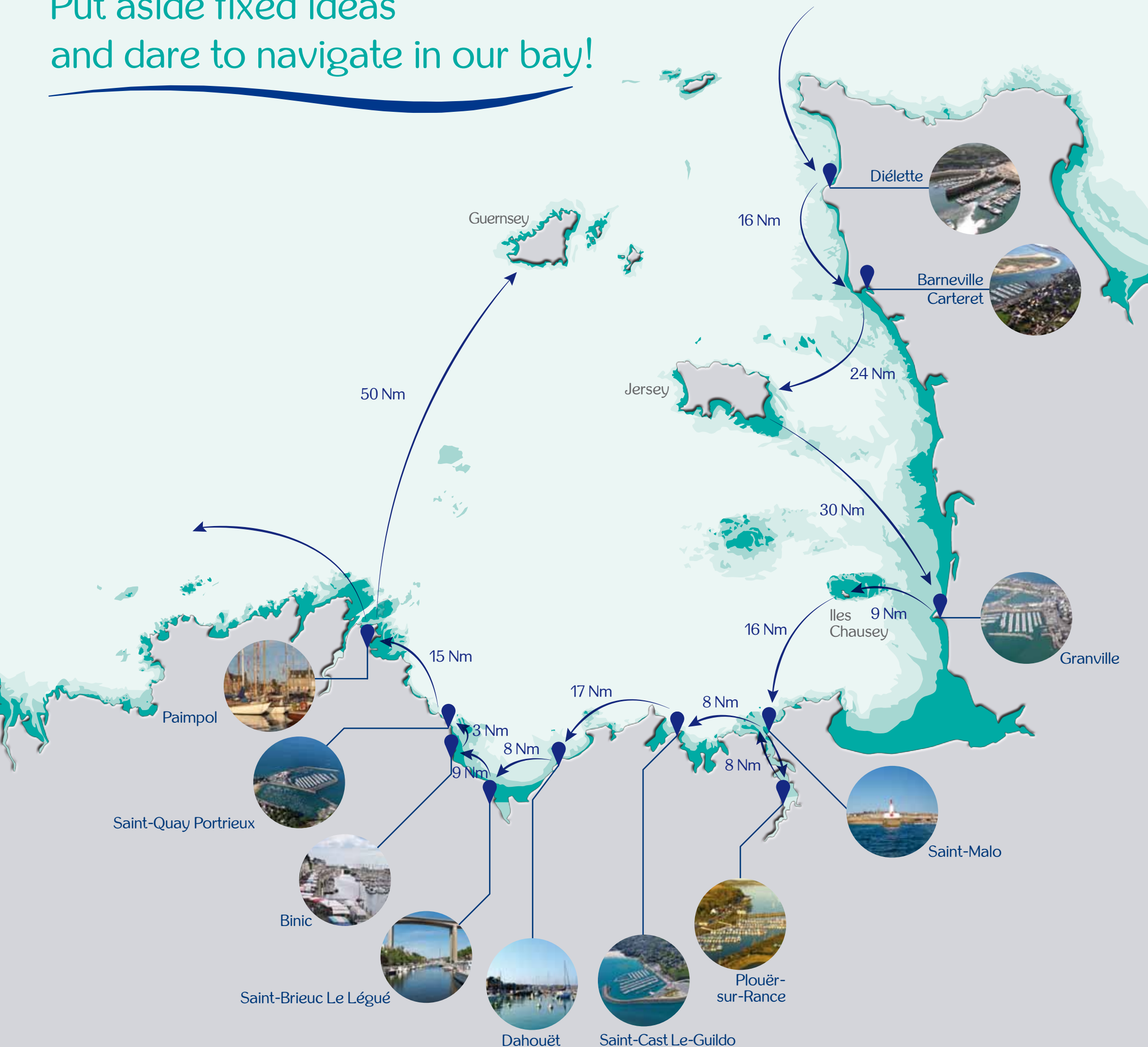
At the Heart of the Channel



Plan your visits as you like

DIÉLETTE | BARNEVILLE-CARTERET | GRANVILLE | SAINT-MALO
PLOUËR-SUR-RANCE | SAINT-CAST LE GUILDO | DAHOUËT
ST-BRIEUC LE LÉGUÉ | BINIC | SAINT-QUAY-PORTRIEUX | PAIMPOL

Put aside fixed ideas and dare to navigate in our bay!



Forget any pre-conceived ideas and discover the “Heart of the Channel” for yourselves by using this guide which includes all the information you need to profit from the bay’s currents and tides without stress!

This area of the Channel, with its bays linking Normandy and Brittany, offers wonderful sailing opportunities. Prepare to be beguiled by the charm of our ports, each one as delightful as the next!

Enjoy unforgettable moments, cruising and stopovers. Come and go as you wish, you will always be assured of a warm welcome...

Arriving from England, Dielette is the first port to the north after the Blanchard Race. Easy to get to, its access channel, dredged to +0.50m, allows almost permanent access to the holding berth and floating berths, with a depth of 1.5m at H.W. +/- 3h15.

Dielette to Barneville Carteret. 15Nm. Around 3 hours sailing, or less than an hour for motor cruisers. Swing gate sill at +3.5m.

Barneville Carteret to Jersey St Helier. 26Nm. It is preferable to leave as early as possible to make the most of the tides in order to arrive in time to clear the sill of the St Helier marina.

Jersey St Helier to Granville. 29Nm. To benefit from the tides it is best to leave at low water so as to ensure enough water on arrival at Granville. Lock +6.5m 1.4m, H.W. +/- 3h.

Granville to Chausey. 9Nm. Take advantage of the first lock to arrive in the Sound in time to moor up to a buoy or anchor before lunch, and if you have the time, inflate the tender!

Chausey to St Malo- Les Sablons. 19Nm. The sill is at +2m. Easy access with the tide heights shown at the entrance to the marina. Plan if possible to leave one hour after H.W.

St Malo to Plouer. 8Nm. The tides in the river are controlled by the hydro-electricity dam. Check the lock times with St Malo, or ring the port of Plouer or visit the www.plouer-sur-rance.fr web site. Plouer has a drop gate at 8m30 Draft 1m50.

Plouer to St Cast. 16Nm. Departure times will vary with the dam lock times. The port of St Cast is a deep water harbour, so no worries about arrival times!

St Cast to Dahouët. 17Nm. Be aware of the currents around Cap Frehel ! The Dahouët sill is at 5.5 m plus your draft. Leave 4/5 hours before high water.

Dahouët to St Brieuc- Le Légué. 8Nm. Leave 3 hours before H.W. so as to enter the Le Légué lock on the high. Simple!

St Brieuc to Binic. 9Nm. Leave 2 hours before H.W. to arrive in Binic on the high. Works every time.

Binic to St Quay- Portrieux. 3Nm. Leave whenever you like. St Quay Port d’Armor is a deep water 24 hour port with no tidal restrictions!

St Quay to Paimpol. 15 Nm. Best to sail on the rising tide. Leave 4 hours before H.W. and with a bit of luck you’ll be able to go straight in. Lock opens 2h30 either side of H.W.

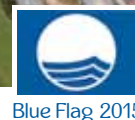
Paimpol to Bréhat. 5Nm. Leave with the second lock opening and an hour later you are on breathtaking moorings. As in Chausey, take the time to inflate the tender!

Now that you are a seasoned sailor and have mastered our tidal ranges you can leave Bréhat to sail westward or head towards Guernsey for a quick run home. It’s up to you!

In any event, after this cruise, we feel sure that you will want to come back!

So, safe journey home and see you again soon !

DIELETTE



Distances

Carteret : 15 NM
Cherbourg : 30 NM
Granville : 46 NM
Aurigny : 18 NM
Guernsey : 28 NM
Jersey : 36 NM

A harbour right in the heart of a conservation area

Lying on the west coast of the Cotentin peninsula and facing the Channel Islands, Port Dielette offers an unrivalled marina (420 berths of which 70 are reserved for visitors). Situated in a remarkable setting at the foot of a picturesque little fishing village, a stopover in Port Dielette is a must for lovers of nature who want to benefit from the tranquillity of the place and its exceptional geographical position on the doorstep of the Alderney Race.

A little bit of history...

Originally a grounding harbour, the first jetty was constructed in 1731 by the Marquis of Flamanville. A few decades later Dielette became the largest port in the Manche in terms of tonnage thanks to the extraction of the famous granite from the area's quarries. This stone, much sought after by builders, was even used to pave the Place de la Concorde in Paris in 1837!

Equally famous for its underwater iron mines, the hamlet of the hamlet of Dielette has kept its unique charm. Nestling on the north slope of the Cape of Flamanville and overlooking the port it remained a little fishing port right up until redevelopment work began in 1996.

Bureau du Port

Terre-plein Est - 50340 TREAUVILLE
Tel. : 02 33 53 68 78
Fax : 02 33 53 68 79
VHF canal 9
portdielette@cc-lespieux.com
www.cc-lespieux.fr > Port Dielette



Dielette approaches

49°33',2 N – 001°51',8 W

Daytime approach

Alignment of the gable of the white house at 125°4 and the lighthouse at the extremity of the west jetty

Nighttime approach

West jetty (49°33',2N-001°51',7W); entrance light at sectors (Iso.W.R.G.4s), follow the white sector between 135° and 145°

Notable landmarks

- Siouville Church (95m): 49°33',31.7N-001°50',26.4W to IMN to the north east of the harbour entrance
- Flamanville Nuclear power plant: 49°32',3N-001°52',8W to 1.3NM to the south west of the harbour entrance

Examples of Way Points

- WP1: approach south west, 49°32',87N -001°53',91W to 0.22MN from the cardinal west of Flamanville
- WP2: approach north west 49°33',60N -001°52',53W alignment of the west jetty light at 125°4' at 0.63MN to the harbour entrance
- WP3: approach north west, 49°33',30N -001°51',86W alignment of the west jetty light at 0.1NM from the harbour entrance

Dangers

- To the south west of the harbour entrance, cardinal west (Q(9)15s) of Flamanville signals the area forbidden to navigation in front of the electricity power plant (cf plan) and the old partially demolished loading station, 49°32'45.20N-001°53'07.50W
- To the north, cardinal west of Platé signals the Cannichon Rocks
- The west jetty is not lit up
- Possible strong swells at the harbour entrance during the winter period

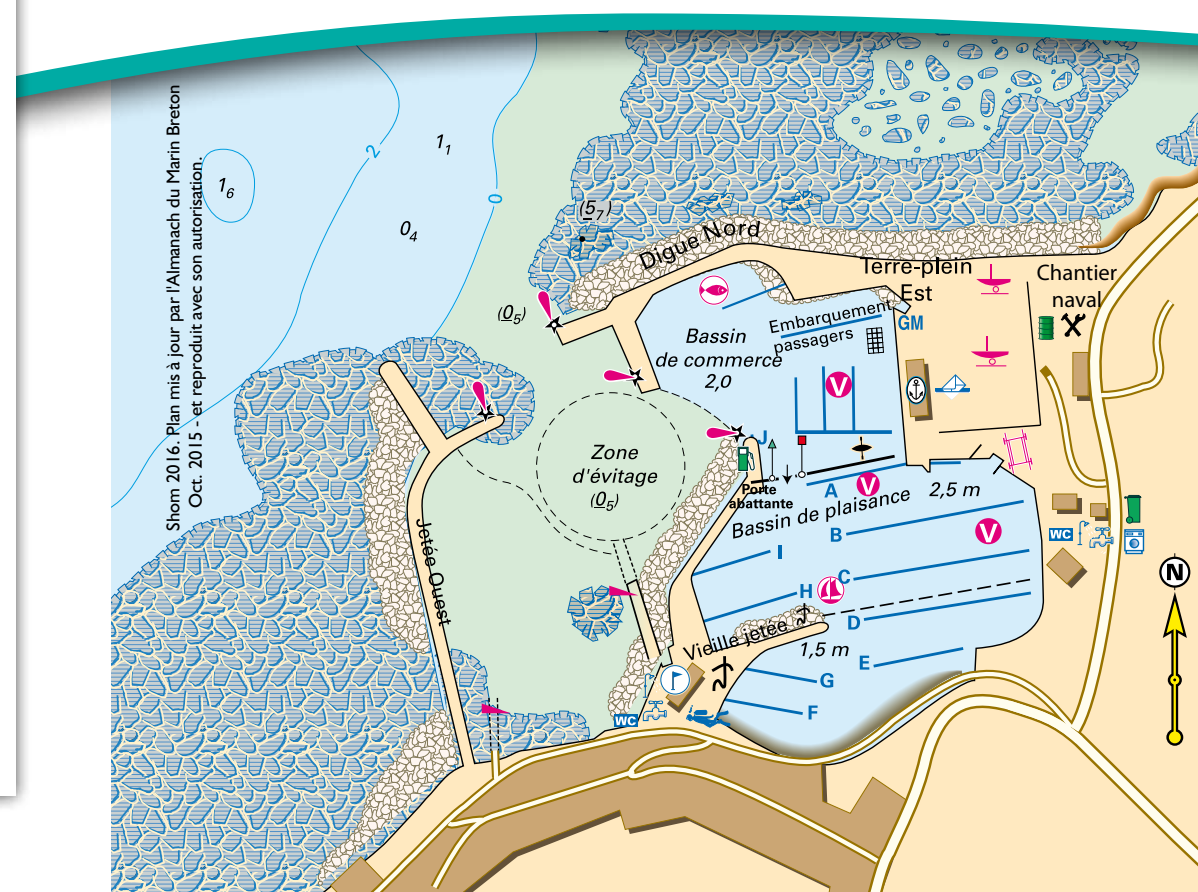
An easily accessible port

The entrance channel to the port is dredged at +50cm which allows an almost permanent access to the commercial dock, according to the tides and your boat's draught. For example, a boat with a draught of <1.4m can enter 24/7 at neap tide (mean). The pontoons situated in the commercial dock allow you to wait comfortably until the opening of the marina gate or to overnight; water and electricity is available. The commercial dock is dredged at <2M which allows the berthing of large draught boats. The sill of the swing gate is at +3.5m.

At opening and closing there is 1.5 m of water. There is a graded depth indicator on each side of the gate and passage is controlled by lights: two green lights and one white authorise crossing whilst three red forbid.

The northern part of the visitor area is dredged at -2.5m (the southern part at -1.5m). When you enter the marina visitor pontoons are to port: pontoon A, pontoon B (southern side from B000 to B028) and pontoon C (northern side from C003 to C027).

All mooring posts at Dielette are placed on pontoons and catwalks accessed by a gangway and supply water and electricity (to reset every 12 hours).



Services:

A warm welcome awaits you at Port Dielette. The entire team is on hand to make your stay as comfortable as possible and to answer any questions you may have on the services on offer:

- free Wi-Fi
- shower and toilet facilities
- launderette
- nursery area
- a fuel berth situated in the commercial dock dispensing diesel and unleaded 95, available 24/7 with a credit/debit card
- 40 ton boat crane
- dry storage and careening areas
- mast hoist,...

You may also take advantage of the numerous businesses in the harbour:

- restaurants
- chandlers
- sail loft
- seasonal tourist information office.

Note: For several years Port Dielette has cared for the environment. Awarded Blue Flag status and a partner in the campaign "I sail, I recycle" it provides recycling bags, a harbour waste and recycling centre; black and grey water pumps and the careening area is equipped with waste water recycling plant.

Things to see and do:

Either on land or at sea the activities on offer at Port Dielette are diverse. Try, amongst other things, kayaking or wind surfing at the Dielette nautical centre or even diving; enjoy the fine sandy beaches nearby or discover the wonderful countryside to be found along the numerous hiking paths that criss-cross Dielette. After the Platé coast, rejoin Siouville-Hague and try your hand at surfing or enjoy the sea bathing.

For more information:
la Hague Tourism Office
www.lahague-tourisme.com/
accueil@lahague.org
Tél. : 02.33.52.74.94

Protected by the cliffs of the Cap and the sand spit, the access tidal channel to the estuary of Barneville-Carteret first leads to the commercial and fishing port and then to the well-sheltered marina at the end. The marina offers nearly 400 berths with pontoons, 60 of which are reserved for visitors. Free wifi, laundry and shower facilities, self-service fuel pump and boat hoisting are available too. The «Port des Isles» is also the ideal place for cruises to the Channel Islands both for yachtsmen and holiday-makers thanks to the Manche Iles express ferry.

Reception

Harbor office:
+33(0)2.33.04.70.84
contact@port-des-isles.fr
VHF: Canal 9

More information on Barneville-Carteret
and on the marina opening times:
www.barneville-carteret.fr
(mobile application available)

Other tourist information:
www.otcdi.com



Well-being is the keyword...

Further to a survey targeting Jersey registered boat owners in 2014, the Port des Isles was named 2nd as most popular outside of Jersey marina together with St Cast St Guildo !



Blue Flag 2015



What else...

- Set sail for a day-trip to Les Ecréhous! A wild archipelago located between Jersey and Barneville-Carteret, less than 7 miles off the Norman coast, Les Ecréhous are only accessible to visitors aboard the Cotentin schooner "Neire Mâove" which organizes cruises. Swept with strong tidal streams the area should thus be tackled by boaters with plenty of expertise in pilotage. The archipelago of Les Ecréhous defines, westwards, the Passage of the Déroute.
- These islets are administratively part of the parish of St. Martin and therefore depend on the Bailiwick of Jersey, in the Channel Islands.
- Mainly consisting of a large reef of rocky heads, this place is ideal for the practice of fishing and shellfish picking, swimming and diving. Les Ecréhous are host to a small population of grey seals and dolphins can most likely be seen in the surrounding waters.
- Three islets are exposed : «la Maîtr' Ile» the largest of the archipelago, «la Marmotière» smaller than the first one but with a few clustered granite huts providing refuge to fishermen or used as holiday residences by Jersey people in summer and finally «la Blanche Ile», the smallest which is connected to the previous one by a sandbar almost 100m long underwater at high tide.
- At night, it is important not to miss the sunset over the Cap de Carteret and to watch the glow disappear behind Jersey!
- Take a golf break! An 18 hole golf course is now welcoming you near Barneville-Plage, the second tourist area of the resort where you will find , if you are a fully-fledged sportsman, a nice spot for windsurfing or kitesurfing depending on prevailing winds.

- Port des Isles is located in the picturesque heart of Carteret, one of the three urban areas of the seaside resort of Barneville-Carteret which has 2300 inhabitants in winter and about 18,000 in summer. Carteret is a bustling little town with many trendy shops, bars and restaurants. If you are keen on culture and heritage, it is also there that you will find the Park Exhibition Hall, the St Louis chapel and the cinema. The town centre is 2km away in the village of Barneville. It has kept its feudal mound and is dominated by the fortified square tower of its Roman church listed as a historical monument. It's easy to get there on foot or by bike through the Tôt hamlet well-known for Mère Denis' famous wash house!
- Stretching on either sides of the channel entrance, three beaches, including two supervised in season, are tempered by the Gulf Stream providing them with warmer water than anywhere else.

- The resort is classified Family + and was awarded the Blue Flag for clean beaches and harbour.
- At high tide, the estuary is a great place to enjoy sailing, rowing, windsurfing, kayaking or paddle boarding. Look no further for information : the Pôle Nautique (sailing and rowing school) is recognizable with its panoramic lounge overlooking the water ; you will see it as you proceed up the fairway just before entering the marina.

GRANVILLE

A harbour right in the heart of town

Port of Herel approaches

Access to the basin (where the speed is limited to 3 knots) is by navigation of the harbour area (speed limit 5 knots) which extends from the Roche Gauthier on the starboard side, past the Tourelle du Loup, to the Pointe du Roc, on the port side.

Two Jarlan breakwaters protect the calm of the Herel's 1000 berths of which 150 are reserved for visitors who can enjoy the use of all the comforts one would normally expect (toilets and showers, free Wi-Fi, internet hotspot.....), as well as two welcoming pontoons equipped with water and electricity.

Entry to the basin is controlled by a swing door, which is completely closed if the sea has not reached +6.10 m and completely open at +6.65 m. A tide gauge at the entrance to the basin indicates the water depth. At the turn of the tide the process is reversed but the outgoing current hastens the raising of the door.

The door is open, on average, six hours per tide leaving plenty of time to sail at will in the bay of Granville.

So let the current carry you all the way from Carteret to Granville, passing by the Channel Islands, and after a stopover in our seaside resort, sail on to Saint Malo via the Chausey Islands archipelago...

Contact

02 33 50 20 06
herel@granville.cci.fr
<http://marina.granville.cci.fr>
VHF Canal 9

A multitude of attractions for young and old alike...

Whether you are a fan of shopping, a devotee of museums or a lover of the great outdoors there is something to suit all tastes. Go off and discover the High Town with its narrow alleyways, the market, the town centre, the old Customs' coastal paths, the parks and beaches, all a visual and sensory delight.

This once cod-fishing port is today a seaside resort steeped in history that will lead you just as much in the steps of the old pirates as in the world of Haute Couture, thanks to the Villa des Rhumbs where Christian Dior once lived.

To round the day off on a real high note, spoil yourself with a seafood platter (Granville being France's number one shellfish port!) followed by a trip to the cinema or a turn at the Casino!

Markets



All year
Open air market : Saturday 8h - 18h
Covered market (food) : Saturday 8h- 14h
Organic market : Tuesday 16h30 - 19h

bordered of authentic landscapes!

Granville and its region , treasures to discover

In town or in the country the coast and its hinterland offer a multitude of treasures to explore in genuine bracing surroundings. The whole family will be delighted by the riches and colours of the countryside and the activities available.

Water sports (sailing but also kayak, kite surfing) land sports (golf, horse racing, hiking or pony trekking) or air (adventure flight or parachute jumping in the Bay of Mont St Michel): fun jaunts (beach foraging, crossing the bay on foot) or cultural outings (visit the numerous historic and religious sites, discover the knowhow of local artisans such as copper workers) There are thousands of good reasons to spend time in Granville!

The Chausey archipelago

This microcosm of nature nestling just nine nautical miles from Granville will enchant you with its 365 islets that show themselves at the whim of the tides. A veritable paradise for fishermen, lovers of wild and unspoiled countryside will be equally entranced by a day out to remember!

Mont Saint Michel

Need one say more? Its very name is the stuff dreams are made of. Rising up in the Bay between Granville and Cancale its Archangel that towers over the Abbey eternally watches over the multitude of ramblers that roam the bay as far as the eye can see. Follow your guide and complete escape is guaranteed.

Opening times

Harbour office: open all year
■ July/Aug from 8.00 to 10.00 pm everyday
■ Low season. from 8:00 to 12:00 and 2:00 p.m. to 6:00 p.m.
■ Mid season. from 8:00 to 12:00 and 2:00 p.m. to 6:00 p.m everyday

Distances

Chausey : 9NM - Cancale : 12NM
Jersey : 30NM - Guernesey : 56NM



Saint-Malo - a historic and touristic town.



SAINT-MALO

Contact

02 99 81 71 34
port.plaisance@saint-malo.fr
www.saint-malo.fr
VHF Canal 9

©Pierrickcontin.fr

Saint-Malo is ideally situated along the Emerald Coast, making it one of the most esteemed tourist destinations in Brittany.

There are 50 000 year-round residents in Saint-Malo, but the city is bursting with up to 200 000 occupants during the summer season. This historic pirate town was originally a peninsula surrounded by battlements, which were built and rebuilt from the 12th to the 19th century by the famous architects Vauban and Garangeau.

Only 3 hours from Paris by TGV (down to 2 hours 15 minutes en 2017), 40 minutes from Rennes by car, and 90

minutes from Rennes Saint-Jacques airport, Saint-Malo is also a favoured port for travellers to and from Great Britain and the Anglo-Normandy islands of Jersey and Guernsey. More than a million people were transported to and from Saint-Malo in 2014.

Saint-Malo is also a town rich in major cultural events, including the prestigious festivals 'Étonnants Voyageurs' - the most visited literary event after the Paris book fair and 'Quai des Bulles' comic book fair, and 'La Route de Rock', as well as influential sporting meetings like 'La Route de Rhum' - the single-handed transatlantic race that sets off from the Saint-Malo coast every 4 years since 1978, the 'Raid de Corsaires', the racing multihull trophy, the 'Tour



To see / To visit

High tide at Saint-Malo

Between the celestial pull and the geographic location, the 'Cité Corsaire' boasts the largest tides in Europe. The tidal range, i.e. the difference between the high tide and low tide, reaches on average thirteen or so meters! At high tide at 'Le Sillon', the waves can sometimes reach the top floor of the buildings along the seafront. At low tide walkers can discover the exceptional marine biodiversity.



de Bretagne à la Voile' (Tour of Brittany yacht race), or the Mont Saint Michel marathon.

The Port de Plaisance des Sablons, the heart of the Saint-Malo bay.

Nestled at the foot of the Cité d'Alet, about 20 minutes on foot from the walls of Saint-Malo 'Intra-Muros', the Sablons marina is a very popular sailing stopover. The marina has 1 200 places, and gives precedence to the comfort of its users. This stopover is not complete without a visit of Alet, with its magnificent panoramic view from the 'Tour Solidor', the



Museum of the town's history (Château and Tour Solidor)

Discover the history of Saint-Malo through the current collections of more than 8500 assets, particularly centered around the maritime heritage of Saint-Malo and its surroundings. The cod fishing on the banks of 'Terre-Neuve', the maritime trade, the 'Compagnie des Indes Orientales', the 'guerre de course' (commerce raiding) with the renowned Duguay-Trouin and Surcouf, the ocean and naval construction.



Rance estuary, Dinard, the Fréhel headland, and the old town of Saint-Malo.

For the sailors, there are multiple navigating possibilities in the bay. Between the 'islets', islands and forts there is a wealth of discoveries, notably the 'Archipel des Ebihens', 'Cézembre' Island, the 'Grand Bé' at the foot of the battlements, the 'Fort National' and the 'Havre de Rothéneuf', right next to the 'Besnard' Island.

The tidal range is remarkable. To properly prepare any navigation it is essential to find out the crossing times below the threshold at the entrance to the marina: the times are given for the threshold at 2 meters and a draft of 1.5 meters, so 3.5 meters above 0 on the maps !



Future Projects

- Extension of the port
- Modernisation of the general facilities (Wifi - video surveillance - etc)

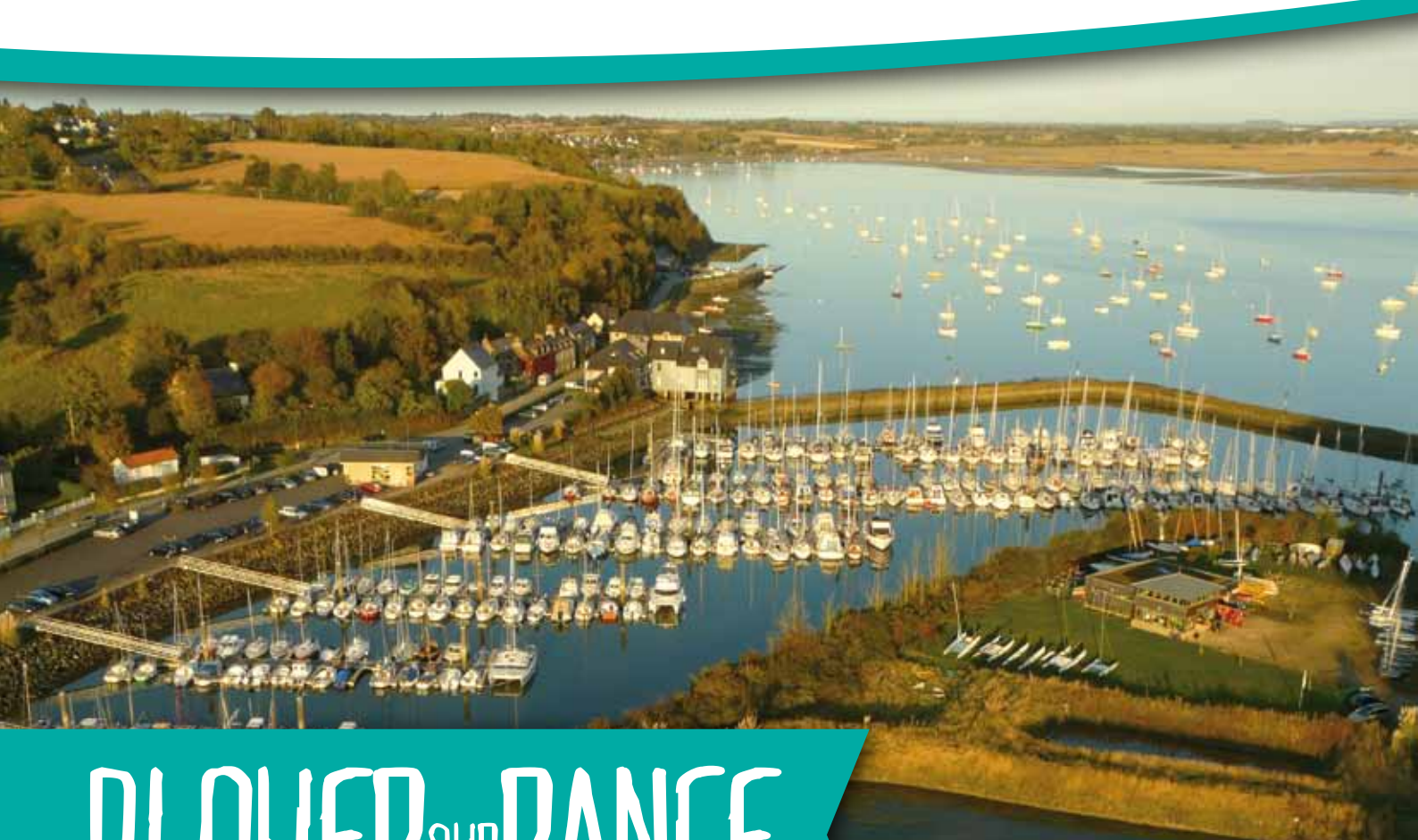
Marina facilities

Fuel dock • Careening area • Crane and travel lift - 20 tons
Recycling • Launch slipway • Dry dock • Laundry and washing facilities

Port professionals:

- Shipyard - boat sales and rentals, equipment and fittings
- Concierge and supplies
- Restaurants





PLOUËR SUR RANCE

If you enter into the Rance Estuary to shelter from weather that is unfavourable to your sailing plans, you will be struck by the sudden tranquility.

The normally calm stretch of water will give you a sensation of security and comfort.

If you enter to discover the estuary and the Rance valley, you will most certainly not leave, without wanting to return.

All along your sail up the Rance, you will discover many little bays, each one more beautiful than the others.

Noteworthy, for example, Montmarin with its château and formal French garden that you will be able to visit, or La Passagère and its cemetery of old boats, Le Minihiac-sur-Rance and its wooden dry dock, where the big ships of the period that sailed to Newfoundland were built and maintained or again, Saint Suliac, a charming little village full of character. As you sail up the river towards Plouër-sur-Rance, you will notice the beautiful manor houses, « malouinières » built in the VXII and XVIII centuries by the Saint Malo ship builders. You will also notice a number of Tidal Mills. The Plouër-sur-Rance Marina will welcome you, after 6 nautical miles of sailing.

A harbour nestled in the countryside. A haven of green.

Sheltered from the prevailing winds, you will be warmly welcomed by a team that will go out of its way, to ensure that you have a pleasant stay.

This will be your last port of call before the canal, providing your draught is superior to 1m50.

You will begin your day by enjoying the « viennoiseries » (bread, croissants, pastries) that you will have ordered the day before. Then, a number of possibilities will be on offer.

Farniente: you will be amazed at the peace and quiet, favourable for reading or simply resting, after days of hard sailing.

Country walks: Arising from its 16 kms of coastline, Plouër-sur-Rance has three marked rambles on offer. Along these shaded pathways, you will also be able to experience some of the most beautiful countryside, also taking the time to admire egrets, herons, shelduck and other wildfowl.....

All along the way, you will meet up with the Rance and its history.

Cycling: The Plouër-sur-Rance Marina will suggest that you might like to hire electric bikes. Thus, you will be able to go up to the village that is 3kms away but also, make your way to Dinan (wonderful Medieval City) or Dinard, via the « voie verte » cycle track.

Don't miss this sailing opportunity. The Plouër-sur-Rance Marina is at your disposal, to inform you of the formalities for passing through the « Barrage de la Rance ». Come and see us.



Plouer marina

Situated 6 miles from the barrage de la Rance and 2 miles from the Chatelier lock.

A very well sheltered marina on the west side of the riverestuary with easy access to the marina.

Access channel

2 lateral marks porthand and starboard hand, between these must be in line with the churches steeple.

Marina bassin

The marina pond is closed by means of a sill gate at the level of 6.5 meters above chart datum, the gate lowered when the level is 8.3 meters.

Before the marina

2 waiting buoys outside the marina.

Marina

The marina has 240 berths and 10 visitors berths.

BARRAGE DE LA RANCE LOCK

Informations water levels :

02 99 16 37 33

Informations lock times :

02 99 16 37 37

VHF : channel 13

Crossing the lock

Direction sea/river

Arrive 10 minutes before the hour
The bridge lift on the hour.

Direction river/ sea

Arrive at half past the hour and you can enter the lock 20 minutes to the hour.

240 berths

10 visitors berths

150 mooring buoyss

For the both areas,

For a permanent berth or mooring, these's a waiting list which must be applied for by post.



1 At the end of the B Pontoon : visitors

2 Submersible sea wall

3 Underwater threshold

4 Slipway jetty

5 Office

6 Car park

7 technical area

8 Résidence du Moulin

Contact

Canal VHF : 9

Tel. 02 96 86 83 15

Fax : 02 96 89 11 00

plouer.portplaisance@wanadoo.fr



SAINT-CAST^{LE}GUILD



The only deep water marina on the Emerald coast accessible 24/7 !

Easily accessible whatever the tide, « Saint-Cast Port d'Armor » is situated just a stone's throw from some of the great attractions of the Emerald coast, including Saint Malo, city of corsaires, the Ebihens archipelago and the towering cliffs of Cap Fréhel.

The marina team will be delighted to welcome you and make every effort to ensure you enjoy your stay in Saint Cast. They'll provide you with all the information you need for you to make the most of your visit, including details of the beaches of fine sand, hidden creeks and stunning countryside.

Facilities

Inaugurated in 2009, the port of Saint-Cast is a wonderful showcase for marine activities in the Côtes d'Armor, and has been awarded British Standards safety and environmental certifications. The marina has been voted the best marina in the Western Channel for 2015 by the « Voile Magazine ».

Pontoons : 800 places on catwalks, including 50 reserved for visitors

Swing moorings : 180 places on buoys (120 drying out and 60 afloat)

Visitors : 50 places on pontoons equipped with catwalks

Sanitary block 24h/7 (padcode). Fuel 24h/7 payment by bank card

Boat handling service, certified careening area

General information

Opening hours : Season : 8h00 to 21h00 /

Off season : 9h00 to 12h00 – 14h00 to 18h00

Managers : The Côtes d'Armor C.C.I : Tel. +33 (0)2 96 78 62 00

Marina master : Dominique DELAMOTTE

VHF : channel 9

T. : +33 (0)2 96 81 04 43 • F. : +33 (0)2 96 81 04 49

www.cotesdarmor.cci.fr

stcast.plaisance@cotesdarmor.cci.fr

@CCI22_Ports

facebook.com/portdesaintcast

Town Centre

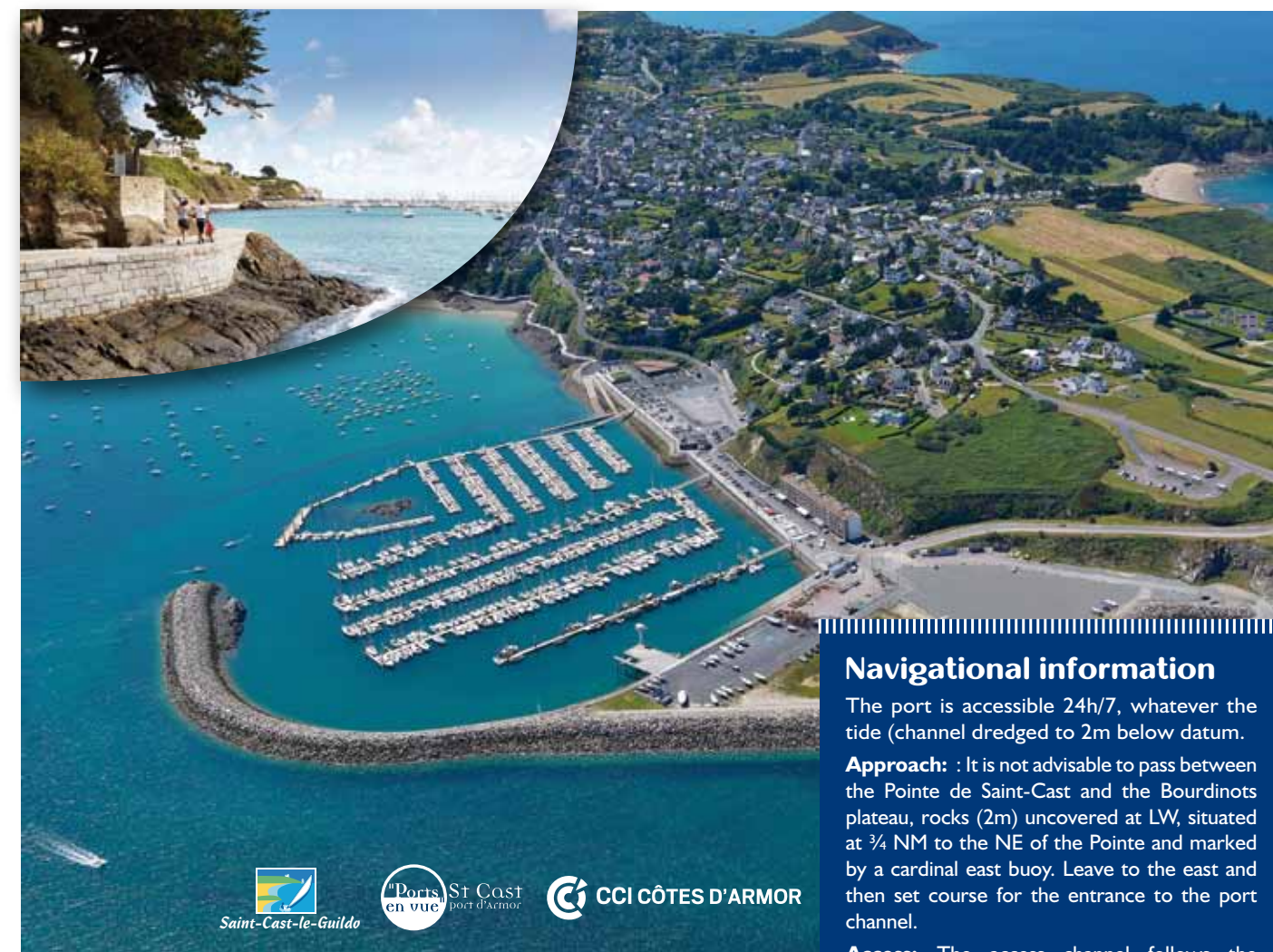
A pedestrian walkway skirting the rocks links the marina to the tourist centre of this seaside resort in ten minutes (restaurants, shops, wide sandy beach...)

Listed nature sites

The Pointe de Saint-Cast (splendid view towards the Fort La Latte and Cap Fréhel), the Pointe de La Garde, the Pointe du Bay.

Activities

Cinema, sailing centre, 18 hole golf course, scuba diving, tennis, horseriding, rambling (12 miles of the GR34 customs and excise path), mountain biking, heated seawater swimming pool.



Navigational information

The port is accessible 24h/7, whatever the tide (channel dredged to 2m below datum).

Approach : It is not advisable to pass between the Pointe de Saint-Cast and the Bourdinots plateau, rocks (2m) uncovered at LW, situated at ¼ NM to the NE of the Pointe and marked by a cardinal east buoy. Leave to the east and then set course for the entrance to the port channel.

Access : The access channel follows the extended jetty. Go round the head of the jetty and pick up the entrance to the new marina.

Lights : Fiso.Green (4 s), B I I NM, Green 8 miles from the jetty (48° 38,5 N - 002° 14,6 W)



Distances :

Les Ebihens : 3NM

Fort La Latte : 3NM

Cap Fréhel : 4NM

Saint-Malo : 8NM

Dahouët : 17NM

DAHOUËT

Stop-over in Brittany

Dahouët and the call of the sea

Dahouët is a typical port, founded by traders in the 12th century who ventured off in olden times to fish the Grand Banks of Newfoundland and Iceland. Nowadays, Dahouët is more geared to pleasure craft with its Salines marina offering 329 pontoon berths. The grounding harbour also offers 169 moorings. As well as the on-hand services (water, electricity, showers and toilets) the port also offers a 2500 m² careening area and a boat park with 50 lots.

Contact

Tel + fax : 02 96 72 82 85
Cellphone : 06 80 07 53 92
www.pleneuf-val-andre.fr
portdahouet@pleneuf-val-andre.fr
VHF : canal 9 et 16

Pléneuf-Val André, one resort with three faces

Dahouët

Sheltered from the winds and overlooked by the former ship-owners' homes, a warm welcome awaits at the port of Dahouët.

Not to miss

The Oratory of Our Lady of Dahouët who has watched over sailors since 1864 from her position at the entrance to the Port de l'aber.

Guided tours by the Tourism Office and the Dahouët Maritime Heritage Museum.

Organic market on the quayside every Thursday at 5pm.

Pléneuf

Founded in the 5th to 6th centuries, Pléneuf is the administrative centre of the municipality.

Not to miss

The Town Hall, a splendid manor in regional style, at the heart of a wooded park.
The village with its neo-gothic inspired church.
The golf course, considered one of the finest in Europe.
Market every Tuesday morning

Le Val-André

A seaside resort offering you a fine sandy beach with 2.5 kms of promenade all the way to the Îlot de Verdelet.

Not to miss

Bars, restaurants, artists' galleries, Casino, clay tennis courts and marine Spa.
Guided tours by the Tourism Office
The jazz festival, children's entertainment, sporting events
Market every Friday morning



Opening times

Autumn/Winter

9.00-12.00 and 13.30-16.30
Monday to Friday and Saturday morning

Spring

8.30-12.00 and 13.30-17.00
Monday to Friday and Saturday morning

Summer 7/7

3 hours before and after high tide





SAINT-BRIEUC

LE LEGUE

The port in the town from which to discover the 5th bay of the world!

The port of St Brieuc Le Légué is situated at the mouth of the river Gouet and its tributary, the Gouédic, and the ideal place to discover the bay of Saint Brieuc, the 5th largest bay in the world for its tidal range. A port nestling in its estuary, at the heart of a county (département) endowed with 20 miles of coastline, Le Légué is the ideal starting point from which to discover the maritime past of the Côtes d'Armor. Strolling along its quays, you can still see the shipowners' brightly coloured mansions, symbols of the riches gained from the great fishing grounds of Newfoundland and the trade with the Channel Islands. As a busy commercial port, with its shipyard renowned for its ship repair work, and a thriving marina, Le Légué is rightly considered as a Channel port worthy of a visit.

Town centres

Choose between Plérin on the left bank or Saint Brieuc on the right bank!

Visits

Admire the shipowners' mansions along the river bank opposite the redeveloped industrial sites, the Carré Rosengart, the Villa Rohannech and its grounds, the Pointe de l'aigle light, Roselier Point, the beach of des Rosières, the GR34 customs and excise coastal path, the rapids tumbling over the granite rocks of the Gouet...

Activities

Cinema, sailing centre, scuba diving, tennis, horseriding, rambling, ice rink.



Navigate in complete safety

Lights: « Le Légué » (safe water marker 48°34,3 N – 002°41,2 W) F. MO(A) B. 12 s, radar. at 210° (C.V.). Light buoys : n°1 (Flashing green. 2,5s) et n°2 (Flashing red. 2,3s) mark the channel entrance at 0,5 NM from the Pointe de l'Aigle light ; Channel marker buoys to the lock giving access to inner basins ; Danger : Shifting sand banks and strong NE winds.

Facilities

Pontoons : 260 places afloat, of which 20 are reserved for visitors
30 supplementary pontoon places will be installed in the summer of 2016
Swing moorings : 250 places on buoys
Sanitary block 24h/24 (padcode),
Boat handling service, certified careening area, paint shop



The approach to the port of St Brieuc Le Légué

The entrance to Le Légué is marked to the South by the light of the East mole (F. sc.rap.R.4m), to the North by the jetty and light of the Pointe de l'Aigle (48°32,2N-002°43,1W) (F.sc.rap. green.8M, vis. 160/070 (270°), and to the South by the square towers of the Church of Saint Michel. The channel is buoyed as far as the lock at the entrance to the inner basins. The sill at the entry to the marina is at 5 metres above chart datum.

This tranquil marina is reached by the passage through a lock, a swingbridge and a pedestrian bridge, and these are easily navigated. The port is accessible on average 2h30 before and after high water.



General information

Opening hours:
Monday to Friday from 9h00 to midday - 14h00 to 18h00 (14h00 to 17h00 Saturday). Closed Sunday and bank holidays.
Managers :
The Côtes d'Armor C.C.I. :
Tel. +33 (0)2 96 78 62 00
Marina master :
Jérôme Cade
+33 (0)6 75 91 67 63
VHF : channel 12
T. : +33 (0)2 96 77 49 85
www.cotesdarmor.cci.fr
legue.plaisance@cotesdarmor.cci.fr
[@CCI22_Ports](https://twitter.com/CCI22_Ports)

Events:

- Market Plérin rivets every Thursday
- Festival Art Rock in May
- Great maritime festival in July
- Animations on the quays of the port in season
- Many restaurants





BINIC



Binic Harbor - Lauréat 2013



Blue Flag 2015

Distances

Dahouët : 10 NM
Le Légué : 9 NM
St-Quay : 3 NM
Paimpol : 18 NM

A lovely beauty spot in the cotes d'armor

In the heart of Cotes D'Armor and only fifteen minutes from St. Brieuc lies the sea side resort of Binic. It is an elegant town with much to offer the gourmets amongst you. There are many activities as well, wonderful coastal walks or simply taking life easy. There are many events through out the year around the port, such as « Les Escale de Binic », (a literary festival), « Les Marionnet'ic » (puppet festival) and the « la Morue en Fete », (a maritime festival celebrating Binic's cod fishing heritage). During the summer the Thursday market is one of the biggest and most colourful in the region. More than two hundred stall holders line the quay side and pedestrian precinct. A convivial atmosphere allows you to meander through the market which is closed to traffic.

An authentic port with character

In the middle of the 1800's, Binic was France's foremost port with 150 to 160 deep sea fishing vessels working out of it. The large houses which line the port bare witness to the prosperity of this fishing port, which continued up until the 1920's. In the 1960's the nature of fishing changed to « coquille St Jacques », (scallops), with more than 120 boats based here, greatly contributing to the prosperity of the town.

It is only in the 1980's that the port developed for pleasure craft, to accommodate many more boats and to provide a quality service and facilities.



On Thursday morning
season

Approach

48°36'063"N - 2°49'195"W

The final approach to the outer harbour of Binic is straight foreword. Align the church spire with the lighthouse at 275°.

The first waypoint is 48°45' N 02° 38' W, is situated east of the Grand Léjon light house. The outer harbour is accessible at half flood tide. The outer port is sheltered from the east by the « Penthivre » breakwater and the quay « des Corsaires » provides shelter from the south. The north is protected by the land.

Access to the inner harbour is through a 10m gate, the sill is 5.5m above chart datum.

The gate opens from once the tide reaches 8.70m and closes as soon as the ebb tide drops to 9m.



Binic, the port in the town

Binic was awarded the « Trophée de l'Escale » in 2013 and the « Pavillion Bleu d'Europe » for many years. Situated in the town center, the port is sheltered, accessible and secure. Binic has capacity of 350 berths (60 for visitors) in the inner harbour and 168 mooring in the outer drying harbour.

Our four members of staff are present every day of the week. They will be happy to answer any of your questions regarding the port and the local area.

Services

Shops, bars, cafés and restaurant's are within 300m of the port.

Port facilities:

- Secure pontoons with magnetic keys and CCTV
- Water and Electricity on every pontoon
- 24h weather forecast at the harbour office
- Free WIFI
- Toilet block
- Disabled facilities
- Washing up and laundry
- Pumping station for black and grey water
- Waste disposal and recycling
- Lifting jib (250kg capacity)
- Drying out facility

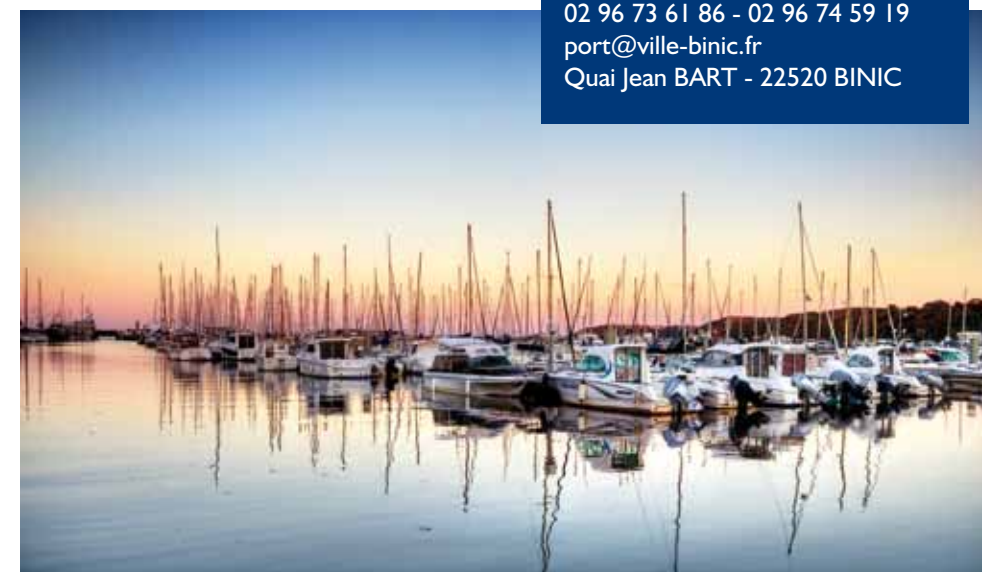
Reception

Harbor office : Open all year

- Summer : de 8h/12h - 14h/18h
- Wednesday and Sunday : 11h/12h
- Winter : 9h/12h - 14h/18h
- Closed Saturdays and Sundays

Contact

02 96 73 61 86 - 02 96 74 59 19
port@ville-binic.fr
Quai Jean BART - 22520 BINIC



WARNING

When the tide is flowing, the current can reach up to 5Knots in the entrance to the inner harbour. There is a clear display on both sides of the harbour office indicating the current flow.

When the gate opens, vessels leaving the inner harbour have priority. Vessels wanting to enter must stand off or moor along the outer quay, keeping the channel clear.

To enable pedestrians and vehicles to pass across the inner harbour entrance there is sliding bridge.

Before entering or leaving the inner harbour you must indicate to the harbour master your intentions, either by VHF channel 9 or telephone 0296736186.

On entering the inner harbour there is a visiting pontoon to starboard. Boats up to 2.5m draft can come alongside.

FLASH ME



www.ville-binic.fr



Welcome to Saint-Quay Port d'Armor !

As you know, our marina is accessible 24/24 whatever the tidal conditions. This is an incredible advantage to get rid of time constraints and height of water calculations! But this is not our only asset. The marina, opened in 1990, offers all you would expect from high quality facilities. Saint-Quay Port d'Armor carry the Blue Flag, is a member of both TransEurope Marinas and Passeport Escales networks, and have been awarded 5 Gold Anchors by The Yacht Harbour Association. While staying with us, have a drink on the waterfront, treat yourself in a gourmet restaurant, grab a bike, or stretch your legs on the coastal footpath and visit the little town!

During July and August, we run a dedicated concierge service to care about your specific requirements...

We notably offer :

- Bike hire, including electric assist bicycles
- Car hire
- Taxi
- Assistance to require a technical intervention from boatyards, marine engineers, sail repair...
- Various mobile phones chargers
- Help to organise your stay
- Assistance for booking travel tickets
- Onboard delivery of goods
- Food provision (foodstuffs, bread, fresh produce, beverages, wines...)
- Tourist offer, hiking trails, golf, tennis, cinema, horse riding, casino...
- Marina guide, town map, calendar of local events...

And with **Saint-Quay Port d'Armor Smart Attitude**, exclusive benefits are granted to our visitors by our partners : bars, restaurants, retail shops, leisure activities and local attractions... Our visitors will be offered a coupon booklet to enjoy exclusive discounts and privileges! Put your trust in the whole marina crew to meet your expectations and make your stay unforgettable!



**SAINT-QUAY
PORT D'ARMOR**
Smart attitude

Marina Office
Espace Eric Tabarly
22410 SAINT-QUAY-PORTRIEUX
TEL. 02 96 70 81 30
FAX 02 96 70 81 31
welcome@port-armor.com
www.port-armor.com



Awarded
5 Gold Anchors



Blue Flag 2015



PAIMPOL

BREHAT



Blue Flag 2015



An historic port in town

An unbeatable stopover on the north Brittany coast, Paimpol is a port full of character right at the heart of the “City of the Icelanders” and has managed to guard its architectural heritage over the years, earning in 2015 the award of Port d’Interet patrimonial (Port of heritage interest).

This tidal basin, with marina, fishing and oyster farming interests, is alive all year round. It is accessed by a lock which is open 2.5 hours before and 2.5 hours after high tide, 365 days a year, day and night.

12 metres wide and 60 metres long, the lock, as in days gone by, can watch the passing of schooners and three masters, especially every two years during the Festival des Chants de Marins.

Its diversity is its strongpoint and today it has become the favoured stop off for pleasure craft, ideal to spend a few days break. Paimpol offers you a pontoon mooring right in the heart of town.

Protected from winds, swells and currents enjoy your stay in comfort, with numerous shops, pubs and restaurants just two steps away from the pontoons live it up with a whole host of festivities (nautical events, concerts, various shows...) or stroll around the market on Tuesday mornings.

Paimpol is also an important point for discovering the surrounding area. Let the Tourist Office on the port guide you, whether it be on foot or bicycle (Footpath 34 passes the port), by train (the station is 400m from the pontoons) or by bus (several “Tibus” bus routes to destinations such as Saint Brieuc, Lannion, Guingamp...); when it comes to discovering the wonders of our region on the landward side you are really spoilt for choice.

Harbour Office

Open all year.
Jean-Louis LE BITOUX (Maître de port)
Tel. : 02 96 20 47 65
Fax : 02 96 20 71 95
mail : port-plaisance@ville-paimpol.fr
www.port-plaisance-paimpol.fr
VHF : canal 9

Locks

Tel : 02.96.20.90.02
VHF : canal 9

Capacity

330 places and around 40 pontoon places reserved for visitors.



The Brehat Archipelago, a pearl in the ocean

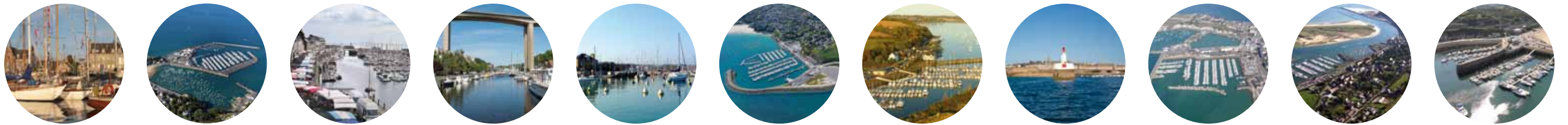
Paimpol could also be a port of call between two anchorages on the Brehat archipelago. This island will enchant you with its creeks, its islets and its pink granite. You can anchor to the south in front of the beach of “Guerzido” and the port of “la Chambre” and also to the west at “la Corderie” following the prevailing winds.

The archipelago is made up of essentially two islands (318ha) at the north and the south, surrounded by 96 rocks and islets. Nicknamed the “Island of Flowers” due to its particularly gentle climate and the lushness of its vegetation, the exploration of its furrowed paths bordered with flowers from the Mediterranean will evoke a thousand perfumes of holiday memories: echium, agapanthus and geraniums from Madeira.

Return to the anchorage and let your self be intoxicated by the sea breeze and by the scent of coconut radiating from the sun soaked gorse.....

A little bit of etymology: “Brehat” comes from Old Breton; “Bre” meaning hill and “kad” meaning combat which gives “Bre ar c’had” the hill of the battle; a battle which undoubtedly took place in the 10th century at the time of the Norman invasion.





OUR BAY

Venture into the heart of our Bay and discover with an ever renewed pleasure the diversity of its landscape, with its flavours and colours that are never the same from one day and one tide to the next.

Bathed in a continually changing and breathtaking luminosity, with shades of grey one minute, the next flashes of deep blue, it's an easy sail from one port to the next. In fact, you are no more than half day's sailing, or an hour and a half in a motor cruiser, from your next port of call.

You can make the tide your most useful ally, enabling you to discover our deep water marinas and locked ports, and in between a great variety of delightful islands, each with its own rich flora and fauna.

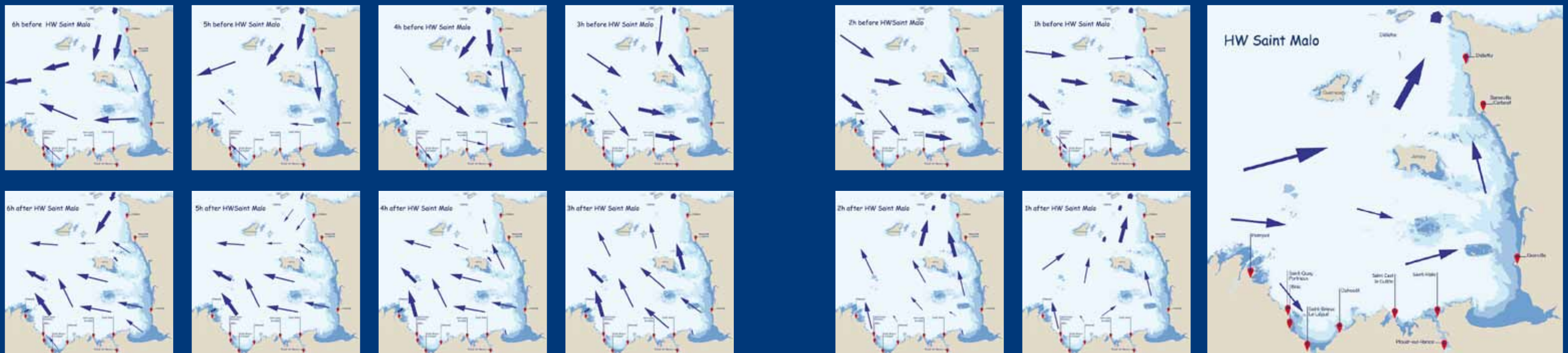
Sailing from east to west, such jewels as Ecrehou, the Chausey archipelago, the Minquiers, the Bay of Mont St Michel, the Rance, Fort La Latte, Cap Frehel, the rocky plateau of the bay of St Brieuc, and the island of Brehat, are waiting to welcome you with open arms. Excite your senses of sight, smell and taste in some wonderful areas ideal for rod and line, net or spear fishing. What better than to feast off the fruits of your labours, including shrimp, bass, mackerel and lobster?

So what are you waiting for?

Table of nautical distances

Nm	Dielette	Carteret	Granville	Saint-Malo	Plouër	Saint-Cast	Dahouët	Le Légué	Binic	Saint-Quay	Paimpol	Saint-Hélier	Saint-Peter
Dielette		16	46	56	64	60	71	71	71	66	66	39	28
Carteret	16		33	49	57	51	63	66	71	67	65	25	30
Granville	46	33		22	30	28	45	49	47	50	52	30	56
Saint-Malo	56	49	22		8	8	28	32	30	32	40	38	52
Plouër	64	57	30	8		16	36	40	38	40	48	44	58
Saint-Cast	60	51	28	8	16		17	25	26	25	34	33	50
Dahouët	71	63	45	28	36	17		8	10	10	24	40	53
Le Légué	77	66	49	32	40	25	8		9	10	24	42	55
Binic	71	71	47	30	38	26	10	9		3	18	43	54
Saint-Quay	66	67	50	32	40	25	10	10	3		15	42	52
Paimpol	66	65	52	40	48	34	24	24	18	15		45	50
Saint-Hélier	39	25	30	38	44	33	40	42	43	42	45		26
Saint-Peter	28	30	56	52	58	50	53	55	54	52	50	26	

Prevailing currents



CONTACTS

DIÉLETTE

Tel. : 02 33 53 68 78 / Fax : 02 33 53 68 79
portdielette@cc-lespieux.com
www.cc-lespieux.fr > Port Diélette

CARTERET

Tel. : 02 33 04 70 84
contact@port-des-isles.fr
www.barneville-carteret.fr
www.otcdi.com

GRANVILLE

Tel. : 02 33 50 20 06
herel@granville.cci.fr
http://marina.granville.cci.fr

SAINT-MALO

Tel. : 02 99 81 71 34
port.plaisance@saint-malo.fr
www.ville-saint-malo.fr

PLOUER SUR RANCE

Tel. : 02 96 86 83 15 / Fax : 02 96 89 11 00
plouer.portplaisance@wanadoo.fr

SAINT-CAST LE GUILDO

Tel. : 02 96 81 04 43 / Fax : 02 96 81 04 49
stcast.plaisance@cotesdarmor.cci.fr
www.cotesdarmor.cci.fr

DAHOUËT

Tel / fax : 02 96 72 82 85
Cellphone : 06 80 07 53 92
portdahouet@pleneuf-val-andre.fr
www.pleneuf-val-andre.fr

SAINT-BRIEUC LE LÉGUÉ

Tel. : 02 96 77 49 85
legue.plaisance@cotesdarmor.cci.fr
www.cotesdarmor.cci.fr

BINIC

Tel. : 02 96 73 61 86
port@ville-binic.fr
www.ville-binic.fr

SAINT-QUAY PORT D'ARMOR

Tel. : 02 96 70 81 30 / Fax. 02 96 70 81 31
welcome@port-armor.com
www.port-armor.com

PAIMPOL

Tel. : 02 96 20 47 65 / Fax : 02 96 20 71 95
mail : port-plaisance@ville-paimpol.fr
www.port-plaisance-paimpol.fr



Diélette : Alexis Morin / CCP
Carteret : Port de Barneville-Carteret / CG50 B Cauvin
Granville : S. Lesauvage / N. Quélavoine
St-Malo : Pierrick Contin / Marie Schmitt
Plouër-sur-Rance : Port de Plouër
St-Cast : Dominique Denis / Alexandre Lamoureux
Dahouët : Alexandre Lamoureux / Franck Hamon
St-Brieuc : Chimair / Emmanuel Berthier
Binic : Vincent Le Roy
St-Quay-Portrieux : D.R / Jean-Michel Gagné
Paimpol : JP Prod / Port de Paimpol
Couverture : Fotolia