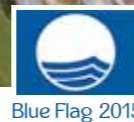




DIELETTE



Distances

Carteret : 15 NM
 Cherbourg : 30 NM
 Granville : 46 NM
 Aurigny : 18 NM
 Guernsey : 28 NM
 Jersey : 36 NM

A harbour right in the heart of a conservation area

Lying on the west coast of the Cotentin peninsula and facing the Channel Islands, Port Dielette offers an unrivalled marina (420 berths of which 70 are reserved for visitors). Situated in a remarkable setting at the foot of a picturesque little fishing village, a stopover in Port Dielette is a must for lovers of nature who want to benefit from the tranquillity of the place and its exceptional geographical position on the doorstep of the Alderney Race.

A little bit of history...

Originally a grounding harbour, the first jetty was constructed in 1731 by the Marquis of Flamanville. A few decades later Dielette became the largest port in the Manche in terms of tonnage thanks to the extraction of the famous granite from the area's quarries. This stone, much sought after by builders, was even used to pave the Place de la Concorde in Paris in 1837!

Equally famous for its underwater iron mines, the hamlet of the hamlet of Dielette has kept its unique charm. Nestling on the north slope of the Cape of Flamanville and overlooking the port it remained a little fishing port right up until redevelopment work began in 1996 .

Bureau du Port

Terre-plein Est - 50340 TREAUVILLE
 Tel. : 02 33 53 68 78
 Fax : 02 33 53 68 79
 VHF canal 9
 portdielette@cc-lespieux.com
 www.cc-lespieux.fr > Port Dielette



Dielette approaches

49°33',2 N – 001°51',8 W

Daytime approach

Alignment of the gable of the white house at 125°4 and the lighthouse at the extremity of the west jetty

Nighttime approach

West jetty (49°33',2N-001°51,7W); entrance light at sectors (Iso.W.R.G.4s), follow the white sector between 135° and 145°

Notable landmarks

- Siouville Church (95m): 49°33',31.7N-001°50',26.4W to IMN to the north east of the harbour entrance
- Flamanville Nuclear power plant: 49°32',3N-001°52',8W to 1.3NM to the south west of the harbour entrance

Examples of Way Points

- WP1: approach south west, 49°32',87N -001°53',91W to 0.22MN from the cardinal west of Flamanville
- WP2: approach north west 49°33',60N -001°52',53W alignment of the west jetty light at 125°4' at 0.63MN to the harbour entrance
- WP3 : approach north west, 49°33',30N -001°51',86W alignment of the west jetty light at 0.1NM from the harbour entrance

Dangers

- To the south west of the harbour entrance, cardinal west (Q(9)15s) of Flamanville signals the area forbidden to navigation in front of the electricity power plant (cf plan) and the old partially demolished loading station, 49°32'45.20N-001°53'07.50W
- To the north, cardinal west of Platé signals the Cannichon Rocks
- The west jetty is not lit up
- Possible strong swells at the harbour entrance during the winter period

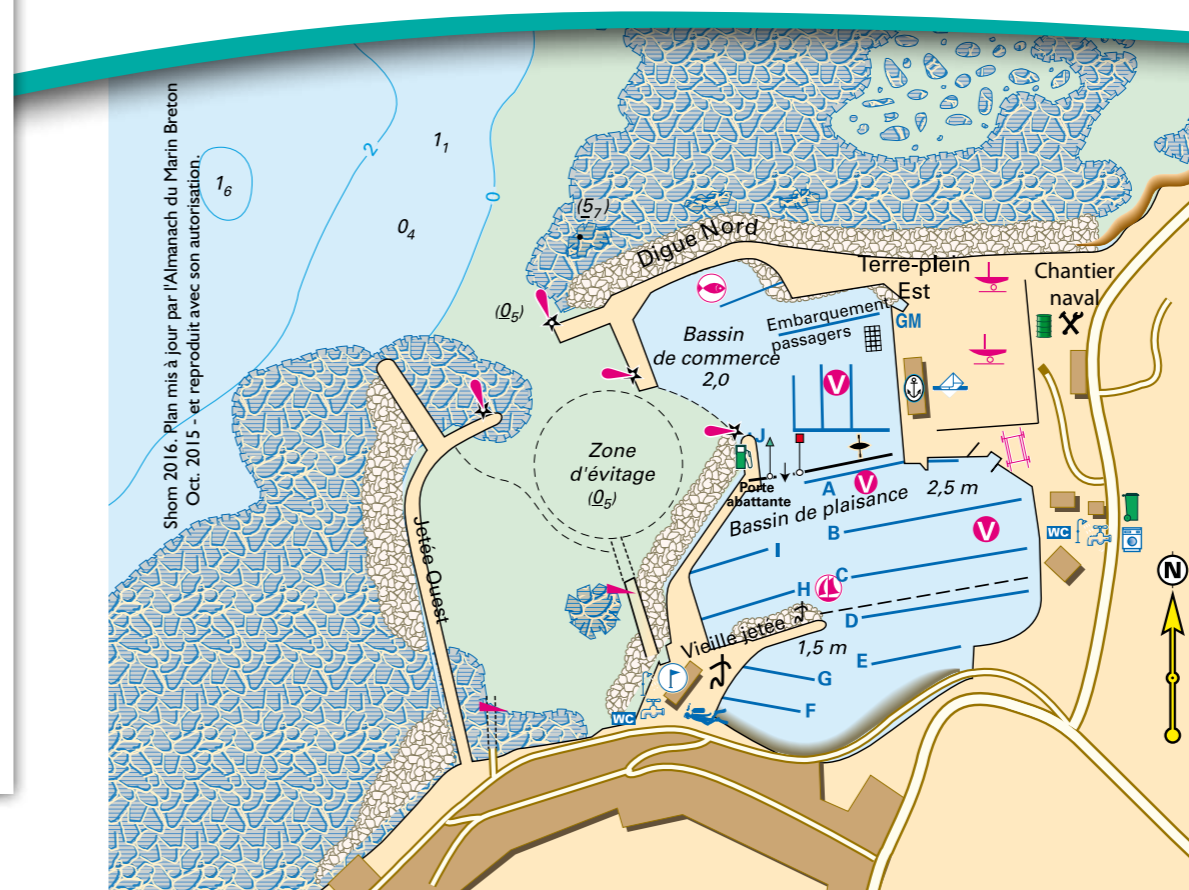
An easily accessible port

The entrance channel to the port is dredged at +50cm which allows an almost permanent access to the commercial dock, according to the tides and your boat's draught. For example, a boat with a draught of <1.4m can enter 24/7 at neap tide (mean). The pontoons situated in the commercial dock allow you to wait comfortably until the opening of the marina gate or to overnight; water and electricity is available. The commercial dock is dredged at <2M which allows the berthing of large draught boats. The sill of the swing gate is at +3.5m.

At opening and closing there is 1.5 m of water. There is a graded depth indicator on each side of the gate and passage is controlled by lights: two green lights and one white authorise crossing whilst three red forbid.

The northern part of the visitor area is dredged at -2.5m (the southern part at -1.5m). When you enter the marina visitor pontoons are to port: pontoon A, pontoon B (southern side from B000 to B028) and pontoon C (northern side from C003 to C027).

All mooring posts at Dielette are placed on pontoons and catwalks accessed by a gangway and supply water and electricity (to reset every 12 hours).



Services:

A warm welcome awaits you at Port Dielette. The entire team is on hand to make your stay as comfortable as possible and to answer any questions you may have on the services on offer:

- free Wi-Fi
- shower and toilet facilities
- launderette
- nursery area
- a fuel berth situated in the commercial dock dispensing diesel and unleaded 95, available 24/7 with a credit/debit card
- 40 ton boat crane
- dry storage and careening areas
- mast hoist,...

You may also take advantage of the numerous businesses in the harbour:

- restaurants
- chandlers
- sail loft
- seasonal tourist information office.

Note: For several years Port Dielette has cared for the environment. Awarded Blue Flag status and a partner in the campaign "I sail, I recycle" it provides recycling bags, a harbour waste and recycling centre; black and grey water pumps and the careening area is equipped with waste water recycling plant.

Things to see and do:

Either on land or at sea the activities on offer at Port Dielette are diverse. Try, amongst other things, kayaking or wind surfing at the Dielette nautical centre or even diving; enjoy the fine sandy beaches nearby or discover the wonderful countryside to be found along the numerous hiking paths that criss-cross Dielette. After the Platé coast, rejoin Siouville-Hague and try your hand at surfing or enjoy the sea bathing.

For more information:
 la Hague Tourism Office
 www.lahague-tourisme.com/
 accueil@lahague.org
 Tél. : 02.33.52.74.94