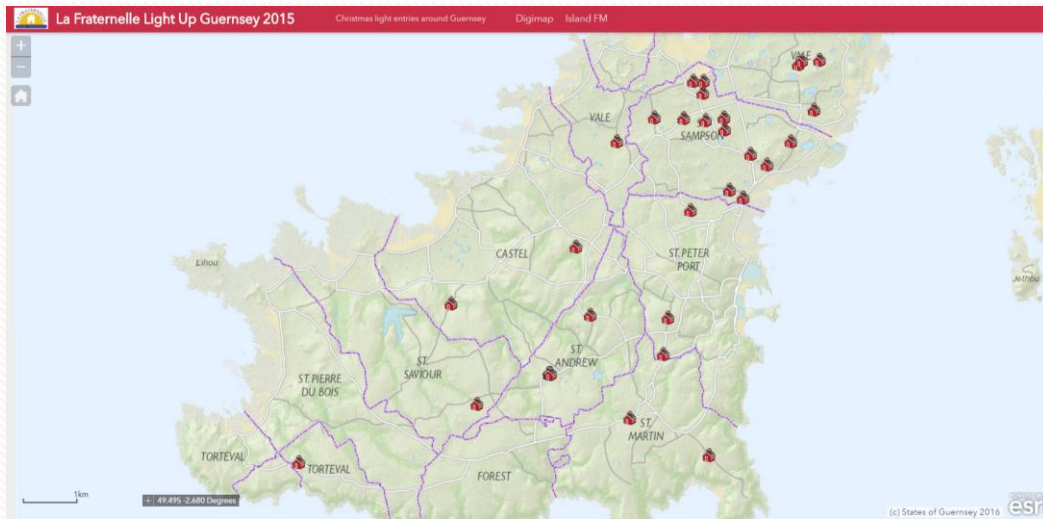


Local Mapping Projects

Daryl Gould & Julia Henney
Digimap Ltd



Christmas Lights 2015



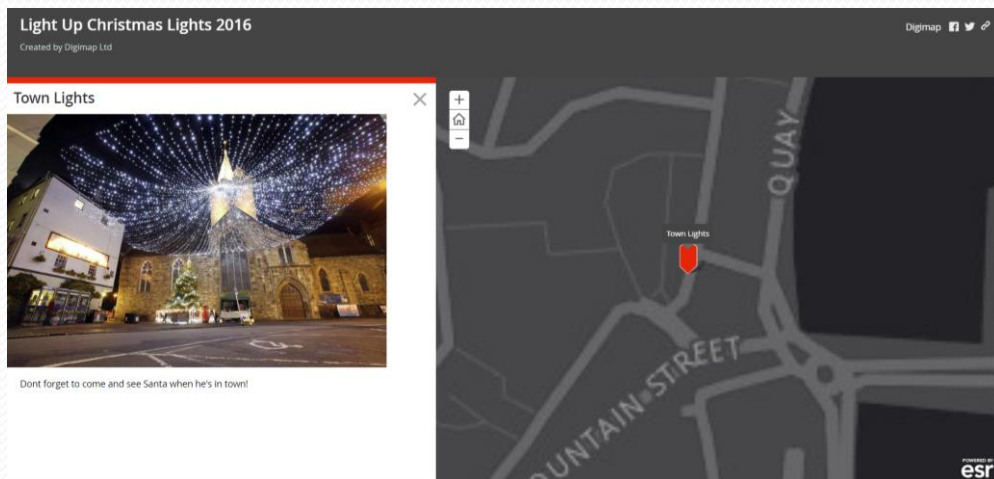
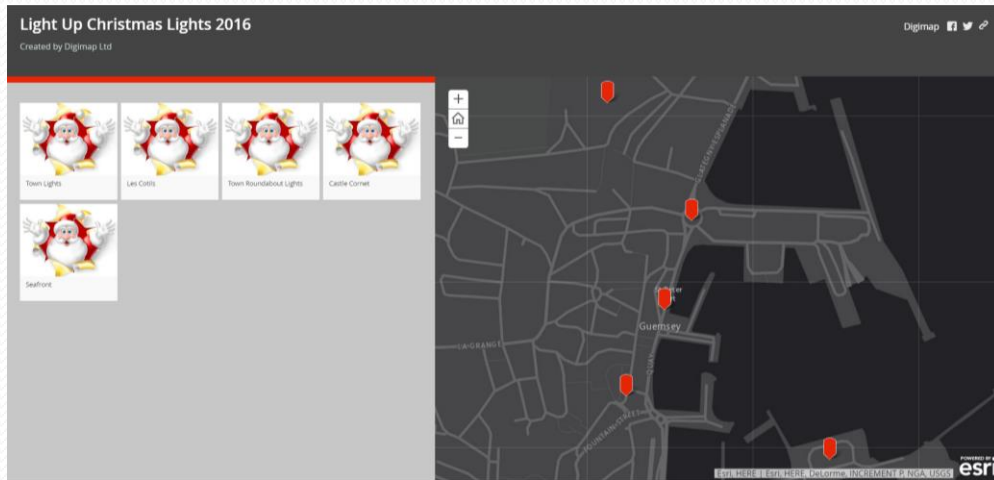
Use link below to view online:

<http://digimap.maps.arcgis.com/apps/webappviewer/index.html?id=d7b453a4c38645d8af1c3800436f9975>

- Island FM have run an annual competition where submissions are made for the best Christmas light displays. The public travel around the island to see them and vote on their favourites.
- Previously the public have encountered problems with finding the displays and route planning.
- In 2015 Digimap Ltd provided an online mapping solution which could display on desktop PC's as well as being portable on smartphones and tablets.
- Amount of detail displayed i.e. houses differs dependent on scale.
- The online map received thousands of views which represents a substantial island reach.



Christmas Lights 2016

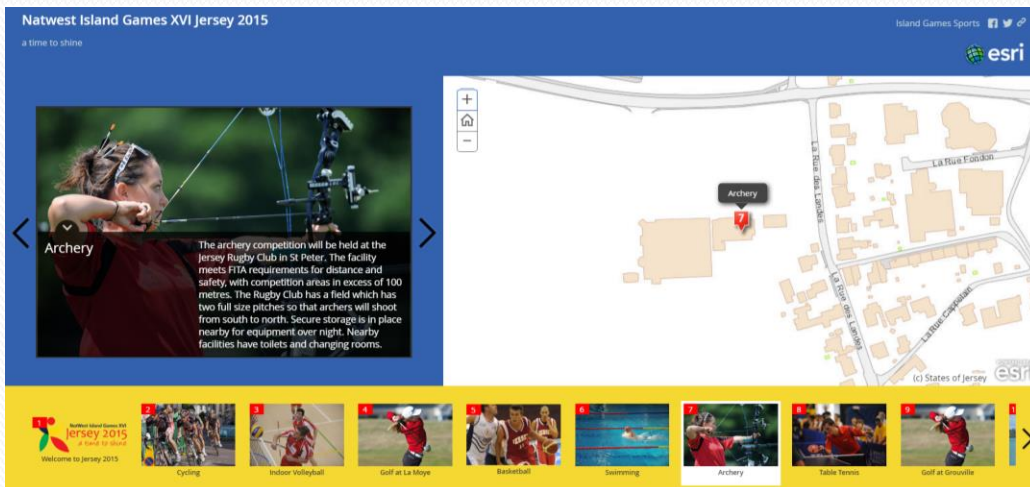
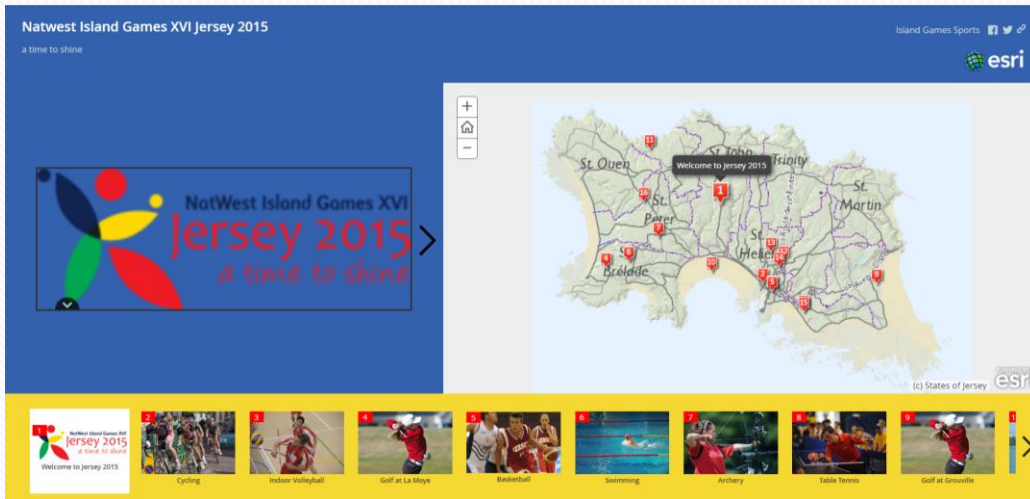


- Following last years success, Island FM have asked for Digimap Ltd to again provide a mapping solution.
- Using ESRI software it is possible to provide the most up-to-date functionality in a mapping application.
- The example shown is a number of pseudo town displays. These filter up or down in number depending on the area of interest selected. In the bottom example only one display is present with further information available.

Use link below to view online:
<http://digimap.maps.arcgis.com/apps/Shortlist/index.html?appid=84e9529e82484a9cba252a59bc25cd5f>



Island Games 2015

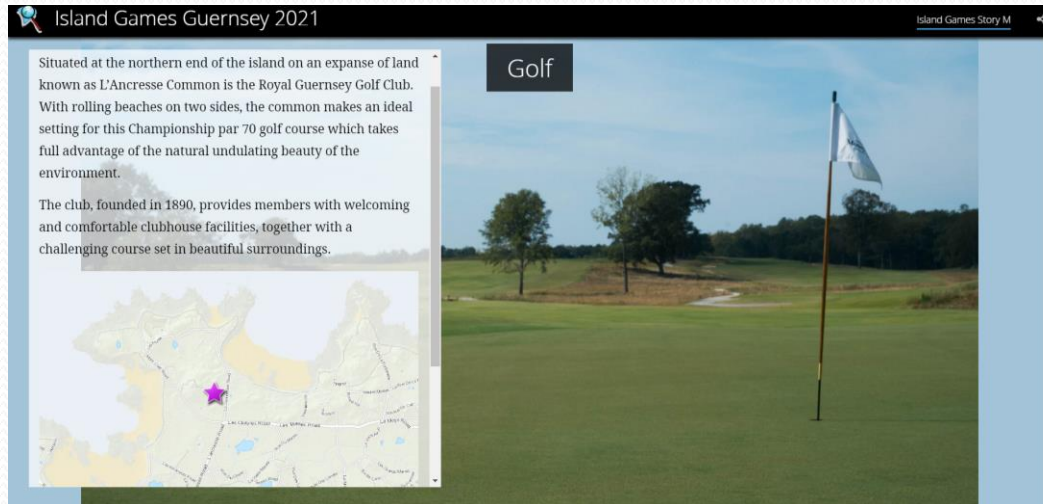


- Digimap Ltd produced an ESRI Storymap for the 2015 game showing sports, location and further information.
- Helps both locals and visitors as the mapping solution offers an easier to use alternative to other mediums i.e. plain text.
- Ease of use and greater interactivity within the public domain provides an opportunity for greater reach, both locally and internationally.

Use link below to view online:
<http://digimap.maps.arcgis.com/apps/MapTour/index.html?appid=0fa84e2113d44adfb003542bc69fba56>



Island Games 2021

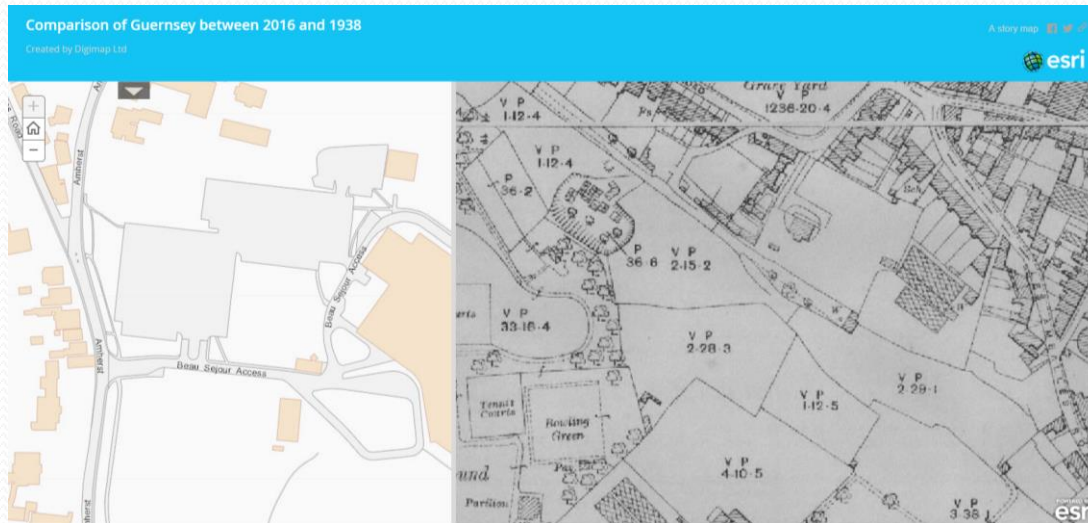


- In 2021 the Island Games are coming to Guernsey.
- The prototype displayed is a cascade version of the Storymap format.
- An opportunity to showcase the island and events to a local and international audience in a modern and appealing format.

Use link below to view online:

<http://digimap.maps.arcgis.com/apps/Cascade/index.html?appid=dd04182139a84ce493f6cd c878b889e4>

Historical image comparison





Use link below to view online:

<http://digimap.maps.arcgis.com/apps/StorytellingSwipe/index.html?appid=fa34e8cf09dd4a7c8a669f0e37980ebd>

- There is a great interest in modern and historical maps throughout Guernsey from advocates, estate agents and the general public.
- The example shown shows via a sliding functionality the difference between the modern map and 1938.
- This brings a map nearly eighty years old into the modern georeferenced age with ESRI online software.



Beached Birds Geoform



Beached Birds Geoform

This form is to be used to record birds which have been beached around the coastline of the Channel Islands.
Please complete all sections as accurately as possible.

1. Enter Information

Name of observer

Time of record

Species or bird (insert)

Is the bird dead or alive?

If the bird is dead, is it fresh or decomposed?

Is the bird entangled in nesting?

Description of any pollution on bird

Description of pollution on beach

Action taken

Additional notes

Contact details of recorder

Date of record

2. Select Location

Specify the location for this entry by clicking/tapping the map or by using one of the following options.

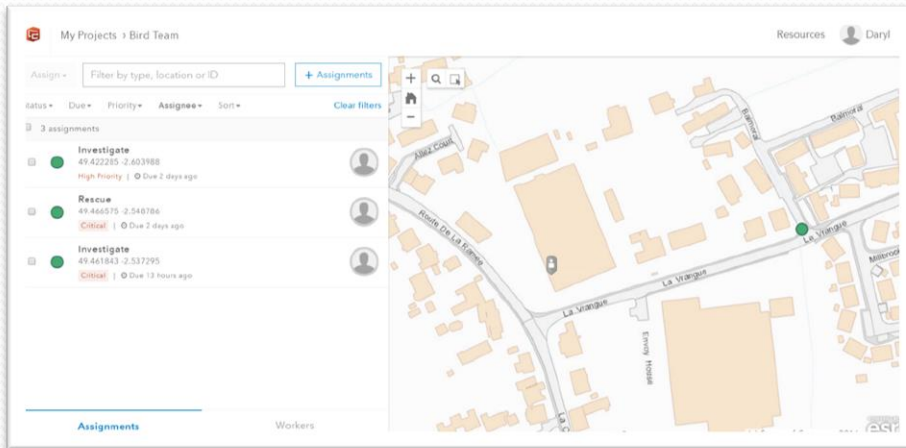
- In 2014 a prolonged period of bad weather led to the death of 14,000 seabirds across the English Channel. Many of which washed up dead on our shores.
- This geoform was designed to help the public report records of birds and share that information instantly with local conservation NGO's

Beached Birds Webmap



- Once the reports of the beached birds have been crowdsourced, the organisations involved in the clean up and conservation effort can access them instantly.
- They can get a full picture of the situation across the Channel Islands, aiding collaborative working and informing decision making.

Beached Birds Workforce



- The Work Force application can be used in conjunction with the geoform and web map.
- It can help co-ordinate the work force involved in data collection and the clear-up operation.