

## Jersey Marinas

Marine Leisure Centre, New North Quay, St Helier, Jersey, JE2 3ND

T +44 (0)1534 447730 E [jerseymarinas@ports.je](mailto:jerseymarinas@ports.je)



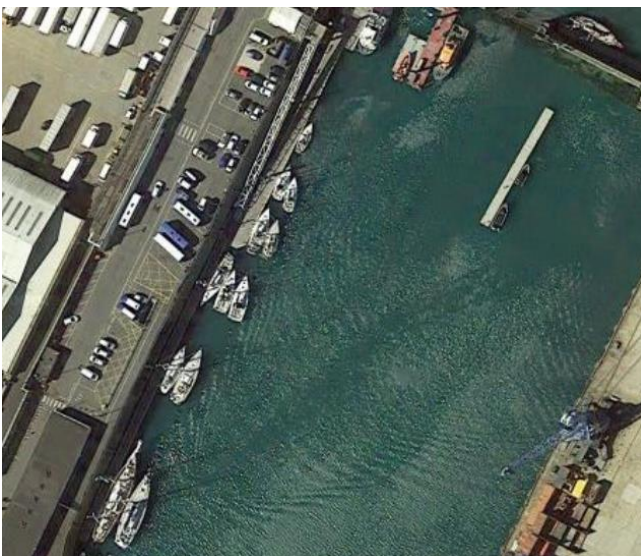
### Information for visitors to St Helier Marina Jersey – April to July 2022

#### St Helier Marina Refurbishment UPDATE.



Following major refurbishment works in St Helier Marina which will see all pontoons and piles replaced, Jersey Marinas look forward to opening the new marina to visitors from **01<sup>st</sup> July 2022**.

We appreciate visiting mariners are looking forward to returning. However, please be aware the only berthing available for visitors before **01<sup>st</sup> July** is on the Albert Pier holding pontoon where space can be extremely limited. Visitors will be required to raft alongside other vessels so access to shore and services may be difficult at times. To avoid disappointment we request that visitors contact Jersey Marinas on +44 (0)1534 447708 or [marinas@ports.je](mailto:marinas@ports.je) before departure to St Helier to check berthing availability.



*Albert Pier Holding Pontoon –Visitor Berthing Area until 01<sup>st</sup> July*

## Jersey Marinas

Marine Leisure Centre, New North Quay, St Helier, Jersey, JE2 3ND

T +44 (0)1534 447730 E [jerseymarinas@ports.je](mailto:jerseymarinas@ports.je)



### Additional Useful information for visiting Mariners.

#### Please be aware there is a requirement to submit a Maritime Customs and Immigration Declaration if your vessel arrives in Jersey from:

- a port outside the Common Travel Area (the UK, Ireland, Isle of Man or Guernsey) **and** someone on board is not British or Irish
- any jurisdiction and carries goods that need to be declared for customs purposes
- any jurisdiction and carries goods in excess of any [duty free allowances](#)

Every person on board arriving from outside the Common Travel Area must have a valid passport unless they hold settled or pre-settled status. In this case, they may travel with a valid EU national identity card.

Mariners can submit the declaration before arrival by following [this link](#), or through the QR code below.



Thank you,

We look forward to seeing you back in Jersey soon.

Kind Regards

#### Michel Le Moine

Marinas Manager

Ports of Jersey

Marine Leisure Centre / New North Quay / St Helier / Jersey / JE2 3ND

T +44 (0) 1534 447730

E [michel.lemoine@ports.je](mailto:michel.lemoine@ports.je)

W [www.ports.je](http://www.ports.je)

