



## Demat

This year marks the 10th anniversary of the opening of the fully upgraded Saint Cast marina. Originally planned to accommodate 400 boats with 20 visitor places, it now provides 825 berths, with places for 50 visiting boats in its present form.

2018 was a very good year for the marina, with many return visitors (73%). Improvements to our infrastructure continue apace, and analysis of our recent questionnaire showed that a majority of our return visitors saw significant improvements to the marina since they were last here.

September saw the arrival of Jérôme Briand, who joined the team as the go-to person on our technical area. As we mentioned in our previous Newsletter, this extended facility is very well equipped, with an improved overwintering facility and a number of marine specialists on hand.



Follow all the port news of the CCI<sup>22</sup> on Tweeter. > [CCI22\\_Ports](#)

Join the port of Saint-Cast on Facebook ! > [portdesaintcast](#)

## The environment

Always conscious of the need to maintain a high standard of environmental awareness, and in line with the Saint Cast policy for the environment and health and safety 2018-2020, as from March this year the marina will be accredited with the AFNOR Port Propre (Clean Port) certification.



## Latest news

### Sailing information

Great news for those sailing our waters for the first time, and even those who are familiar with our coastline but need an update. The hydrographic and oceanographic service of the French navy, the SHOM, has created a website that is open to all. If you need to check the depths of coastal waters, the direction of wave formations over a four day period or simply plot your route, this site is indispensable. **Log on to [data.shom.fr](#)** for further information.

## Le Shom veut « rendre l'océan accessible à tous »

► **Sciences.** Horaires des marées, nature des fonds, courants, épaves... À Brest, le Service hydrographique et océanographique de la Marine (Shom) lance une armada d'outils numériques en libre accès.

Localiser l'Amoco-Cadiz

Informations sur l'épave

Visuel du naufrage

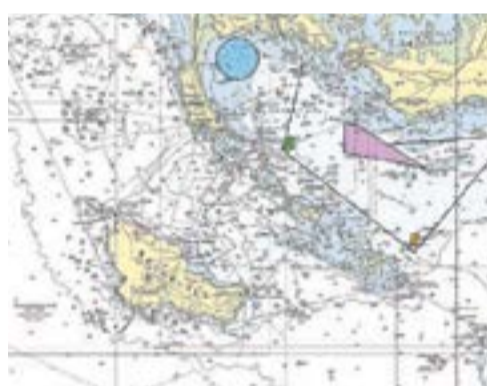
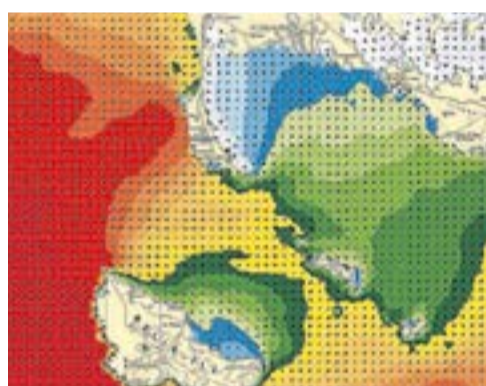
Source : [data.shom.fr](#)

Sondez les profondeurs

Surfez sur les vagues

Tracez la route

Tâtez les fonds marins



## Good practices

In order to make your stay more pleasant, to ensure the safety of all and to contribute to the respect of the environment, some reminders:



**Risk of falling:** Beware of the risk of slipping, be careful when traveling on bridges and pontoons.

For your own safety and that of others, make sure you avoid any obstacles (electric cables, bowsprits / davits / davits on the pontoons).

If there are oil slicks or other liquids related to maintenance operations, on the careening area, notify the site managers immediately.

These areas can be the cause of slipping: be careful when traveling and wear appropriate shoes.



**Pollution risk:** Fuel containers can leak, cause water and soil pollution, and cause falls. Undertake refueling of your vessels at the fuel station, which is equipped with a drip recovery system.



**Let's save:** We noticed overconsumption due to a large use of energy-consuming equipment such as heaters, freezers ... In your absence, please turn off all electrical appliances. **Measures will be taken to control consumption.**

## For more informations, please contact :

Saint-Cast Plaisance,  
Bureau du Port  
22380 Saint-Cast, France  
Telephone : 00.33.(0)2 96 81 04 43  
Fax : 00.33.(0)2 96 81 04 49  
[stcast.plaisance@cotesdarmor.cci.fr](mailto:stcast.plaisance@cotesdarmor.cci.fr)  
[www.facebook.com/portdesaintcast](http://www.facebook.com/portdesaintcast)  
[www.cotesdarmor.cci.fr](http://www.cotesdarmor.cci.fr)

Vous recevez cet e-mail car vous êtes usagers du port. Conformément à la loi informatique et liberté, vous pouvez vous désabonner en contactant le bureau du port.

Crédit photos : CCI Port de St-Cast-Le Guildo



## Marina notes

Following the fire in the Bas Sablons marina in Saint Malo in 2017, we are all the more conscious of the need to provide the maximum security for all our port users. A recent inspection of our pontoons revealed that a number of boats are plugged in to the marina's electrical supply for long periods, even if their crews are absent. This is strictly forbidden under a port bylaw, and it could result in an incident similar to that suffered in Saint Malo.

To underline the need for maximum marina safety, the fire, ambulance and rescue service recently organized a full-scale exercise in the marina, with over a hundred participants. (photo) Instructions concerning action to be taken in case of fire are attached.

Please note that due to renovation work to the sanitary block, the facility will be closed until March 31st. We regret any inconvenience this may cause.

Temporary facilities (3 toilets and 3 showers) are available during this time. These are situated behind the port office opposite the CCI parking.



## Events

Many visitors used Saint Cast as a starting point for watching the "Route du Rhum 2018" which started from Saint Malo in November last year.



We look forward to seeing you at some time during the summer. In the meantime,

*Kenavo and Bon vent*

